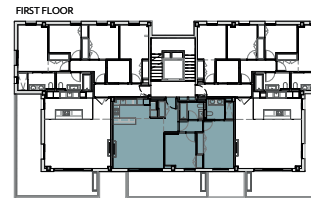
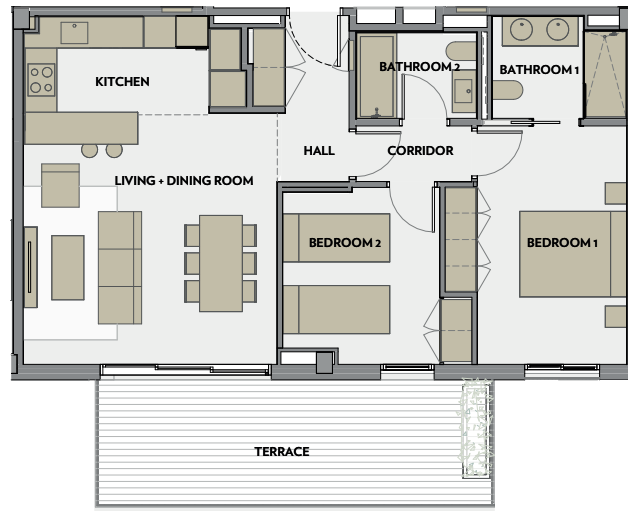




# INFINITUM

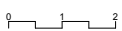
WELCOME TO EVERYTHING

2 bedrooms - A4 1-2



LLEVANT A

A1 E: 1/50  
A3 E: 1/100



VIA MARIS. PLOT II OF THE RECREATIONAL AND TOURIST CENTER OF VILA-SECA AND SALOU

LLEVANT A. BLOCK 4 - FIRST FLOOR 2nd

#### HOUSE AREA

LIVING + DINING ROOM	22,4 m <sup>2</sup>
KITCHEN	7,2 m <sup>2</sup>
BEDROOM 1	13,6 m <sup>2</sup>
BEDROOM 2	10,1 m <sup>2</sup>
BATHROOM 1	4,5 m <sup>2</sup>
BATHROOM 2	3,6 m <sup>2</sup>
HALL	4,7 m <sup>2</sup>
CORRIDOR	2,2 m <sup>2</sup>

TOTAL USABLE AREA 68,4 m<sup>2</sup>

TOTAL BUILT AREA 79,2 m<sup>2</sup>

TOTAL BUILT AREA WITH COMMON AREA 86,1 m<sup>2</sup>

TOTAL USABLE AREA EXTERIOR 19 m<sup>2</sup>

NOTE:  
This map is orientative and subject to possible modifications of a technical nature or imposed by authorized bodies. The total built area does not include exterior surfaces.