



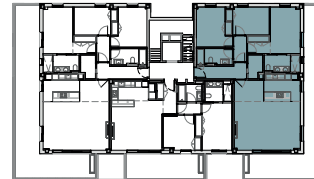
INFINITUM

WELCOME TO EVERYTHING

3 bedrooms - B2 2-3

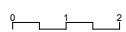


SECOND FLOOR



LLEVANT B

A1 E: 1/50
A3 E: 1/100



VIA MARIS. PLOT II OF THE RECREATIONAL AND TOURIST CENTER OF VILA-SECA AND SALOU

LLEVANT B. BLOCK 2 - SECOND FLOOR 3rd

HOUSE AREA

LIVING + DINING ROOM	28.2 m ²
KITCHEN	13.9 m ²
BEDROOM 1	15.6 m ²
BEDROOM 2	9.6 m ²
BEDROOM 3	11.5 m ²
BATHROOM 1	5.3 m ²
BATHROOM 2	4.9 m ²
LAUNDRY	2.8 m ²
HALL	6.0 m ²
CORRIDOR	2.8 m ²

TOTAL USABLE AREA 100.6 m²

TOTAL BUILT AREA 119.2 m²

TOTAL BUILT AREA WITH COMMON AREA 129.6 m²

TOTAL USABLE AREA EXTERIOR 55 m²

NOTE:
This map is orientative and subject to possible modifications of a technical nature or imposed by authorized bodies. The total built area does not include exterior surfaces.