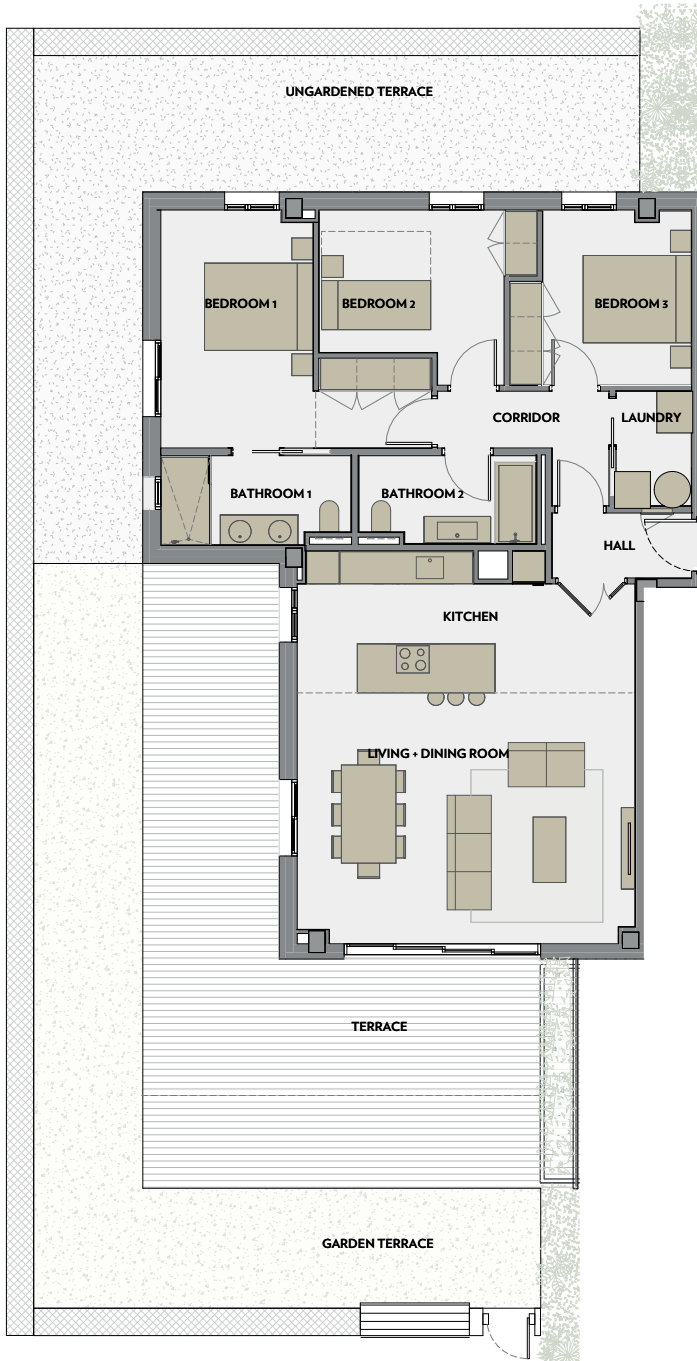




INFINITUM

WELCOME TO EVERYTHING

3 bedrooms - A1 PB 1



VIA MARIS. PLOT II OF THE RECREATIONAL AND TOURIST CENTER OF VILA-SECA AND SALOU

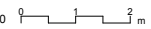


GROUND FLOOR



LLEVANT A

A1 E: 1/50
A3 E: 1/100



LLEVANT A. BLOCK 1 - GROUND FLOOR 1st

HOUSE AREA

LIVING + DINING ROOM	27,9 m ²
KITCHEN	14,5 m ²
BEDROOM 1	15,6 m ²
BEDROOM 2	10,4 m ²
BEDROOM 3	9,8 m ²
BATHROOM 1	5,5 m ²
BATHROOM 2	5,0 m ²
LAUNDRY	2,9 m ²
HALL	3,1 m ²
CORRIDOR	4,4 m ²

TOTAL USABLE AREA 99,1 m²

TOTAL BUILTAREA 118,6 m²

TOTAL BUILT AREA WITH COMMON AREA 128,9 m²

-PAVED TERRACE 51 m²

-GARDEN TERRACE 57 m²

-UNGARDENED TERRACE 52 m²

TOTAL USABLE AREA EXTERIOR 160 m²

NOTE:
This map is orientative and subject to possible modifications of a technical nature or imposed by authorized bodies. The total built area does not include exterior surfaces.