

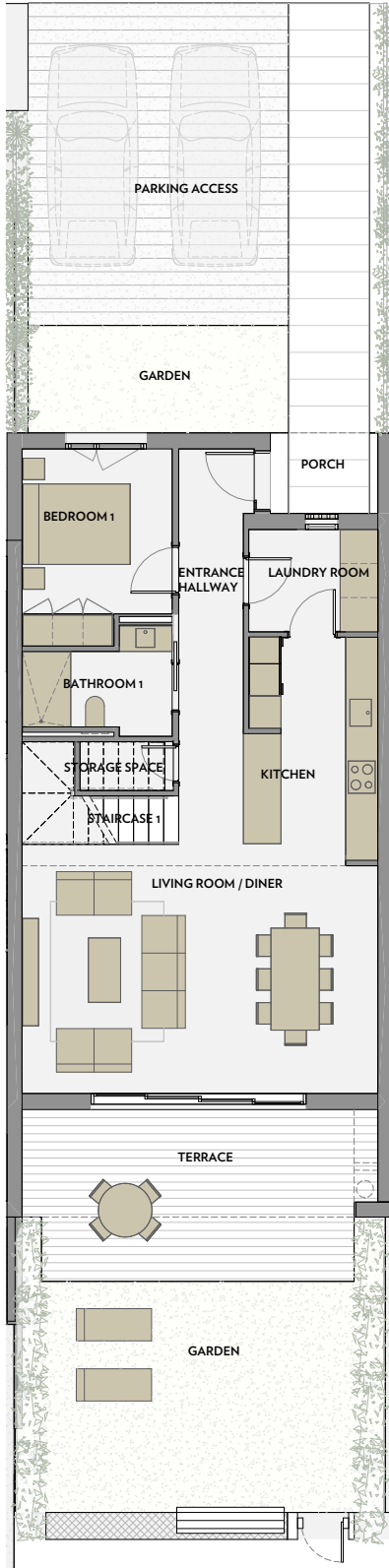


INFINITUM

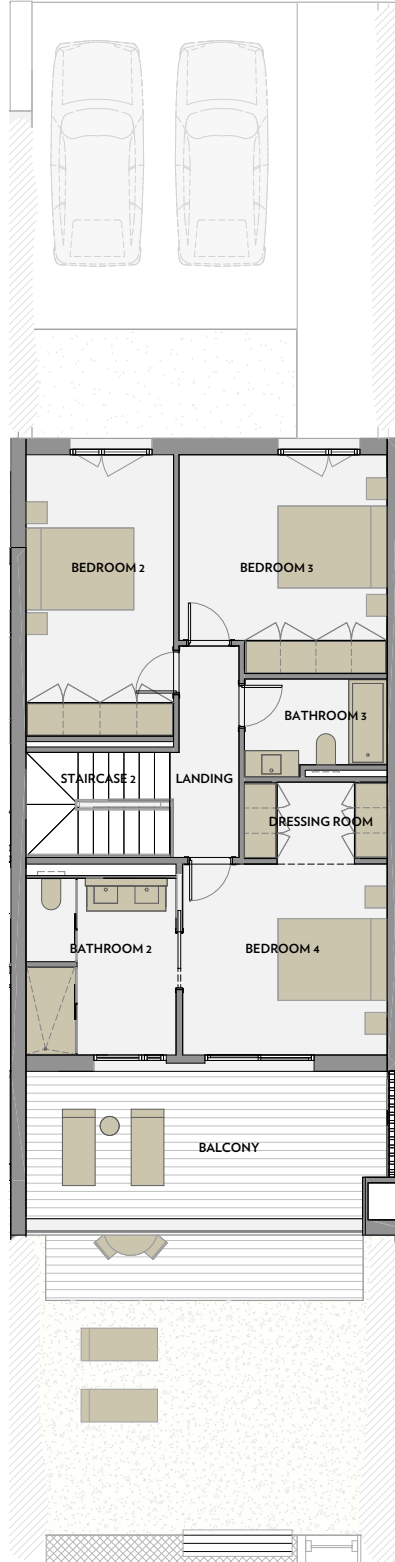
WELCOME TO EVERYTHING

Attached

GROUND FLOOR



FIRST FLOOR



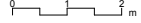
Via Maris. Plot II of the Tourist and Recreational Centre of Vila-Seca and Salou



MESTRAL

A1 E:1/50

A3 E:1/100



MESTRAL - No 4

PROPERTY'S SURFACE AREA

LIVING ROOM / DINER	30.5 m ²
KITCHEN	9.6 m ²
BEDROOM 1	9.6 m ²
BEDROOM 2	13.9 m ²
BEDROOM 3	14.6 m ²
BEDROOM 4	13.2 m ²
BATHROOM 1	4.6 m ²
BATHROOM 2	8.9 m ²
BATHROOM 3	4.3 m ²
LAUNDRY ROOM	4.6 m ²
DRESSING ROOM	3.7 m ²
STORAGE SPACE	1.6 m ²
ENTRANCE HALLWAY	9.1 m ²
LANDING	4.6 m ²
STAIRCASE 1	3.6 m ²
STAIRCASE 2	5.1 m ²

TOTAL USEFUL SURFACE AREA 141.4 m²

TOTAL BUILT UP SURFACE AREA 164.0 m²

-PAVED TERRACE 39.8 m²

-GARDEN 44.6 m²

-PARKING ACCESS 48.0 m²

TOTAL USEFUL EXTERIOR SURFACE AREA 132.4 m²

NOTE:
This floor plan is indicative and subject to possible modifications of a technical nature or imposed by authorised agencies. The total built up surface area does not include exterior surface areas.