

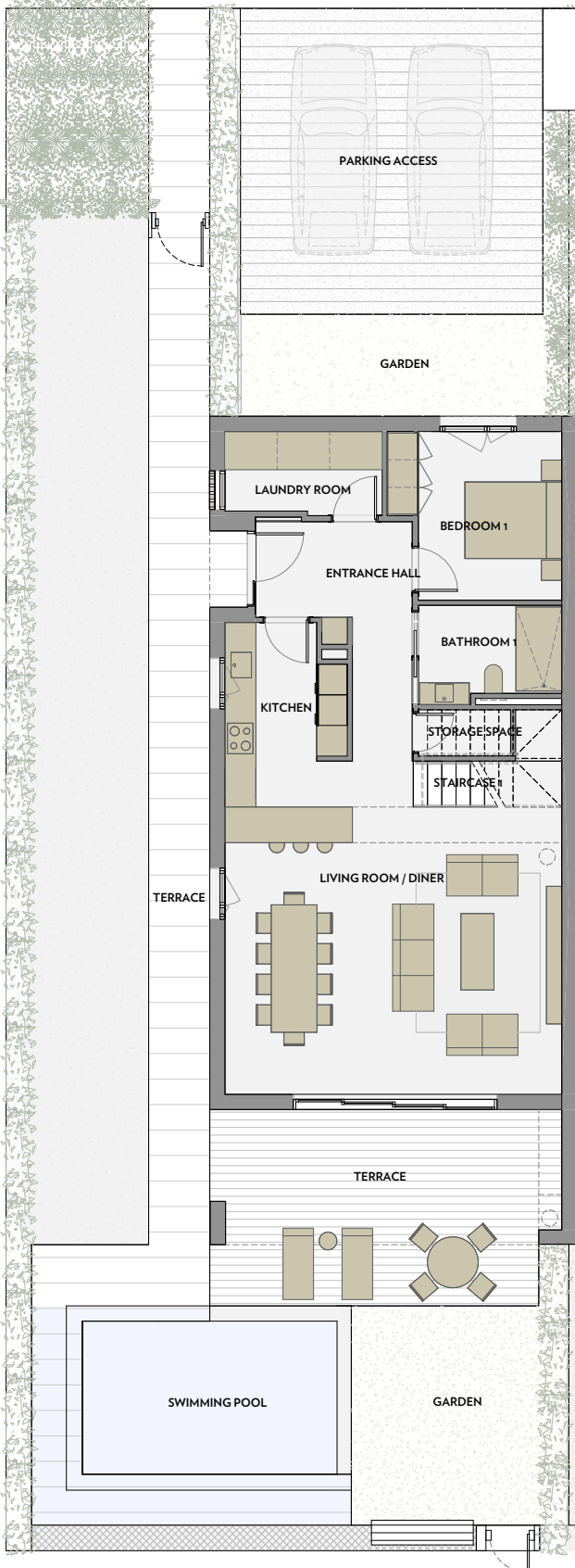


INFINITUM

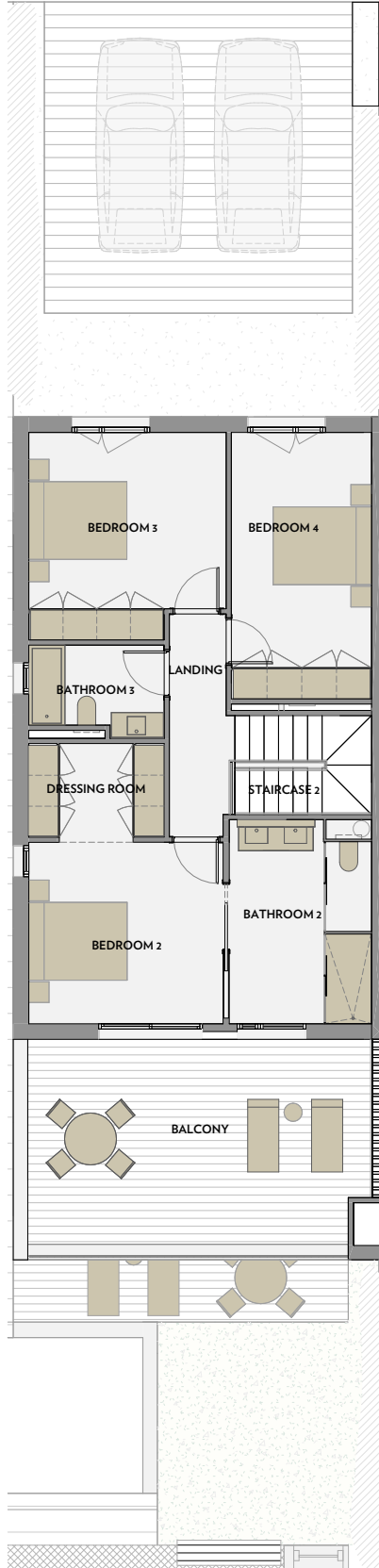
WELCOME TO EVERYTHING

Semi-detached houses

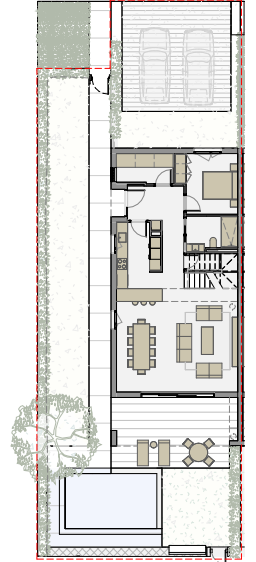
GROUND FLOOR



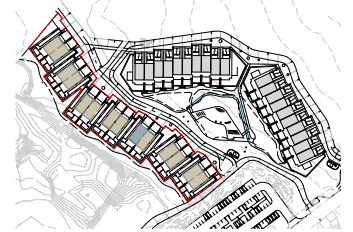
FIRST FLOOR



GROUND FLOOR - GARDEN

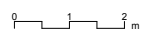


Via Maris. Plot II of the Tourist and Recreational Centre of Vila-Seca and Salou



PONENT

A1 E:1/50
A3 E:1/100



PONENT - No 6

PROPERTY'S SURFACE AREA

LIVING ROOM / DINER	35,5 m ²
KITCHEN	10,0 m ²
BEDROOM 1	10,3 m ²
BEDROOM 2	13,2 m ²
BEDROOM 3	14,5 m ²
BEDROOM 4	13,9 m ²
BATHROOM 1	5,1 m ²
BATHROOM 2	10,4 m ²
BATHROOM 3	4,3 m ²
LAUNDRY ROOM	4,9 m ²
DRESSING ROOM	4,8 m ²
STORAGE SPACE	1,6 m ²
ENTRANCE HALL	10,5 m ²
LANDING	5,0 m ²
STAIRCASE 1	3,5 m ²
STAIRCASE 2	5,0 m ²

TOTAL USEFUL SURFACE AREA 152,6 m²

TOTAL BUILT UP SURFACE AREA 179,37 m²

-PAVED TERRACE AND BALCONY 89,1 m²

-GARDEN 92,0 m²

-PARKING ACCESS 42,3 m²

-SWIMMING POOL 27,0 m²

TOTAL USEFUL EXTERIOR SURFACE AREA 250,4 m²

NOTE:
This floor plan is indicative and subject to possible modifications of a technical nature or imposed by authorized agencies. The total built up surface area does not include exterior surface areas.