



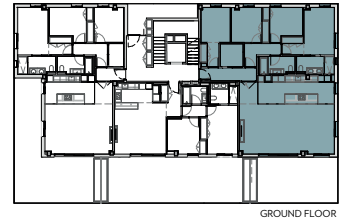
INFINITUM

WELCOME TO EVERYTHING

4 bedrooms - A2 PB 3



VIA MARIS. PLOT II OF THE RECREATIONAL AND TOURIST CENTER OF VILA-SECA AND SALOU



LLEVVANT A

A1 E: 1/50
A3 E: 1/100



LLEVVANT A. BLOCK 2 - GROUND FLOOR 3rd

HOUSE AREA

LIVING + DINING ROOM	39.8 m ²
KITCHEN	20.8 m ²
BEDROOM 1	15.3 m ²
BEDROOM 2	9.2 m ²
BEDROOM 3	10.1 m ²
BEDROOM 4	11.9 m ²
BATHROOM 1	5.4 m ²
BATHROOM 2	5.0 m ²
LAUNDRY	4.3 m ²
HALL	6.1 m ²
CORRIDOR	4.6 m ²

TOTAL USABLE AREA 152.5 m²

TOTAL BUILTAREA 154.3 m²

TOTAL BUILT AREA WITH COMMON AREA 167.7 m²

-PAVED TERRACE 34 m²

-GARDEN TERRACE 39 m²

-UNGARDENED TERRACE 81 m²

TOTAL USABLE AREA EXTERIOR 154 m²

NOTE:
This map is orientative and subject to possible modifications of a technical nature or imposed by authorized bodies. The total built area does not include exterior surfaces.