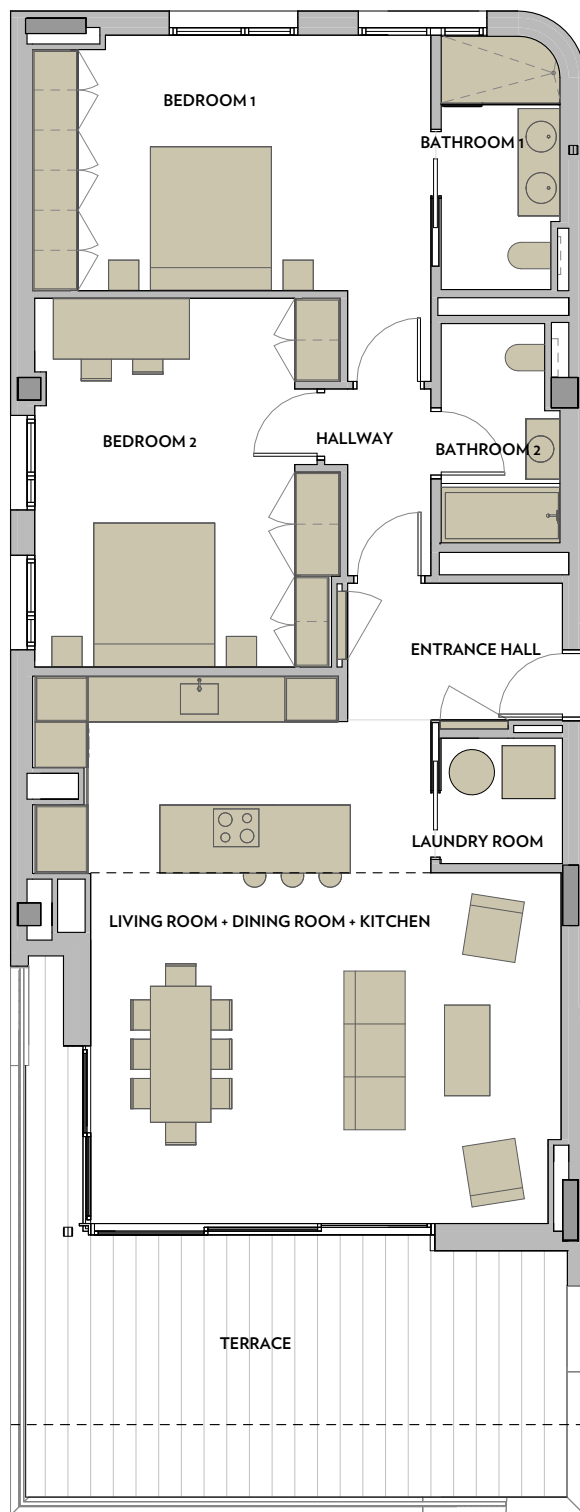


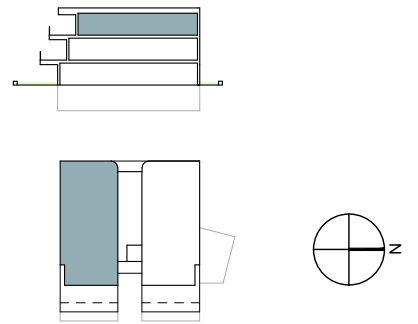


# INFINITUM

WELCOME TO EVERYTHING



## VIA MARIS PHASE III OF THE RECREATIONAL AND TOURIST CENTRE OF VILA-SECA AND SALOU

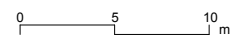


SECOND FLOOR



### MORELLA

A1 E: 1/200  
A3 E: 1/400



#### MORELLA A. BLOCK 2 - SECOND FLOOR 1

##### SURFACE AREA OF DWELLING

|                                     |                      |
|-------------------------------------|----------------------|
| LIVING ROOM + DINING ROOM + KITCHEN | 41.27 m <sup>2</sup> |
| ENTRANCE HALL                       | 5.13 m <sup>2</sup>  |
| HALLWAY                             | 3.02 m <sup>2</sup>  |
| LAUNDRY ROOM                        | 2.65 m <sup>2</sup>  |
| BEDROOM 1                           | 18.92 m <sup>2</sup> |
| BEDROOM 2                           | 19.04 m <sup>2</sup> |
| BATHROOM 1                          | 5.09 m <sup>2</sup>  |
| BATHROOM 2                          | 4.32 m <sup>2</sup>  |

TOTAL USEFUL SURFACE AREA 99.43 m<sup>2</sup>

TOTAL BUILT SURFACE AREA 120.26 m<sup>2</sup>

TOTAL BLT. S.A. WITH COM. AREA 162.65 m<sup>2</sup>

TOTAL USEFUL EXTERIOR S.A. 29.33 m<sup>2</sup>

**NOTE:**  
This plan is indicative and is subject to possible changes of a technical nature or imposed by the authorised bodies. The total constructed surface area does not include exterior surface areas.