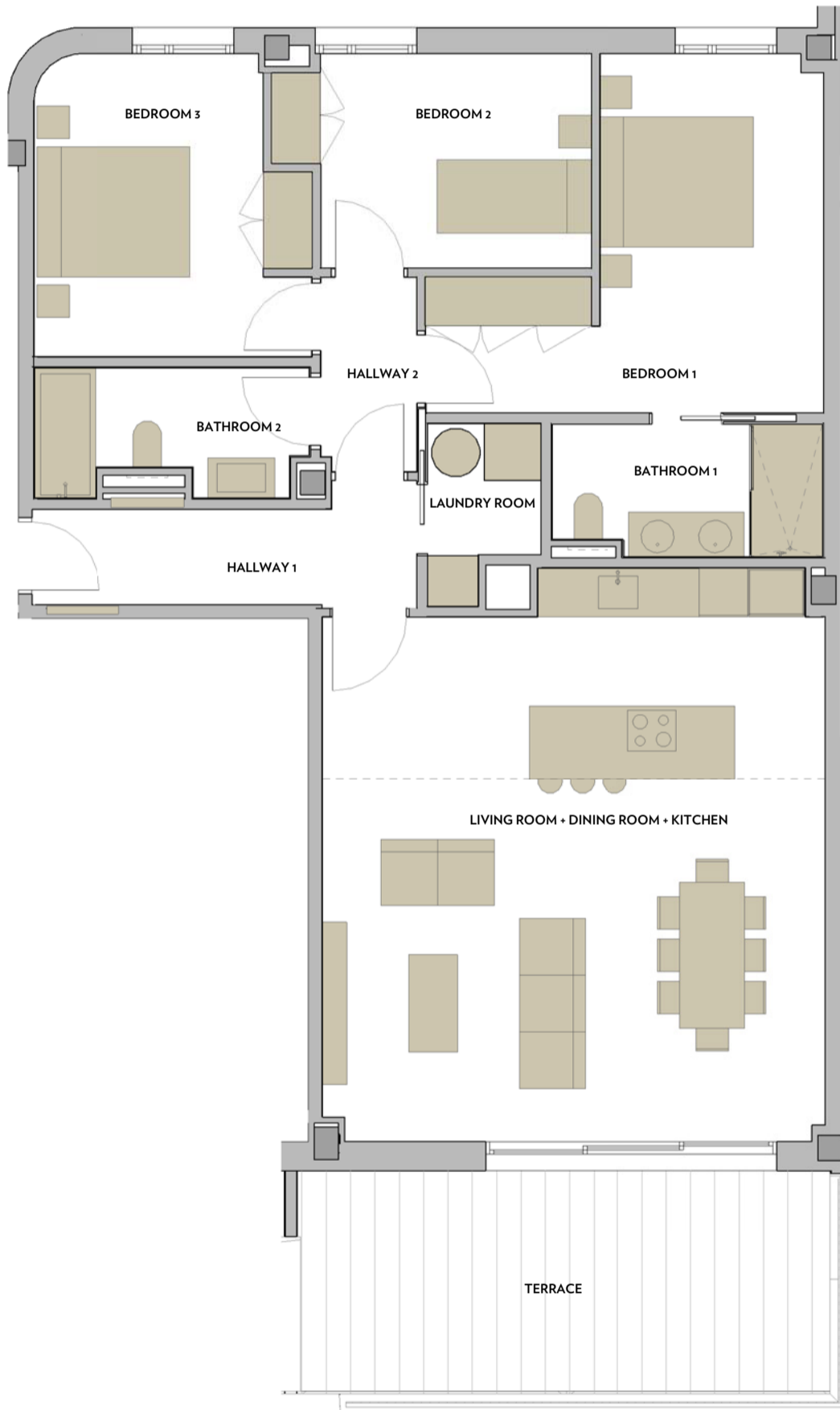


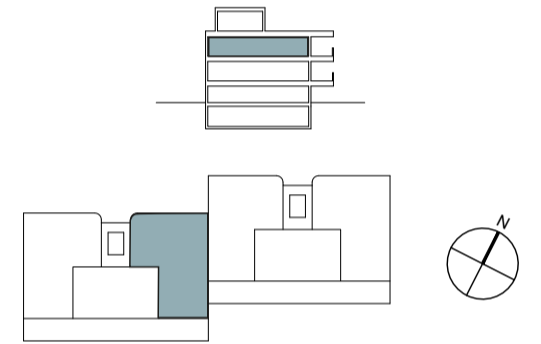


INFINITUM

WELCOME TO EVERYTHING



VIA MARIS PHASE III OF THE RECREATIONAL AND TOURIST CENTRE OF VILA-SECA AND SALOU



SECOND FLOOR



BALQUERA A

A3 E: 1/75 0 1 2 m

BALQUERA A. BUILDING 1. BLOCK 1 - SECOND FLOOR 3ª

SURFACE AREA OF DWELLING

LIVING ROOM + DINING ROOM + KITCHEN	41,97 m ²
BEDROOM 1	15,81 m ²
BEDROOM 2	9,51 m ²
BEDROOM 3	11,72 m ²
BATHROOM 1	5,25 m ²
BATHROOM 2	4,83 m ²
HALLWAY 1	6,43 m ²
HALLWAY 2	2,87 m ²
LAUNDRY ROOM	2,65 m ²

TOTAL USEFUL SURFACE AREA 101,03 m²

TOTAL BUILT SURFACE AREA 117,24 m²

TOTAL BLT. S.A. WITH COM. AREA 143,46 m²

TOTAL USEFUL EXTERIOR S.A. 19,21 m²

NOTE:
This plan is indicative and is subject to possible changes of a technical nature or imposed by the authorised bodies. The total constructed surface area does not include exterior surface areas.