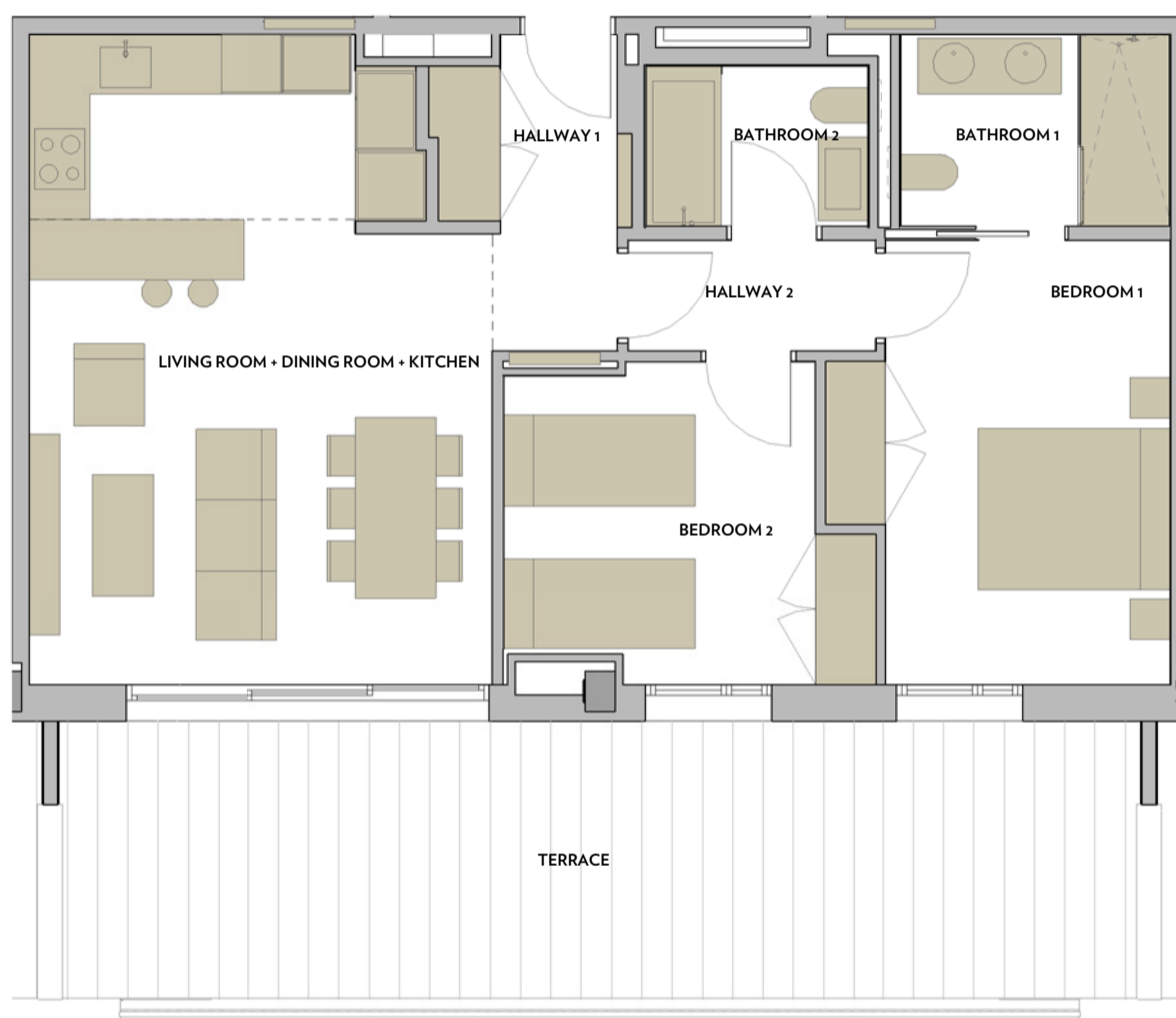


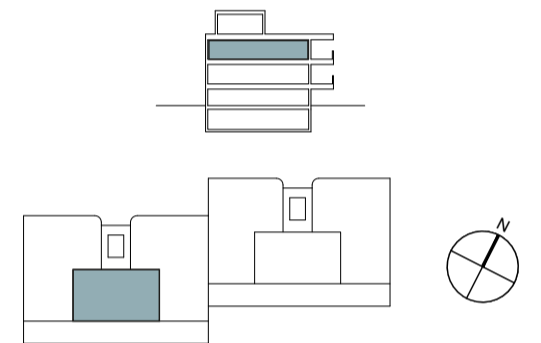


INFINITUM

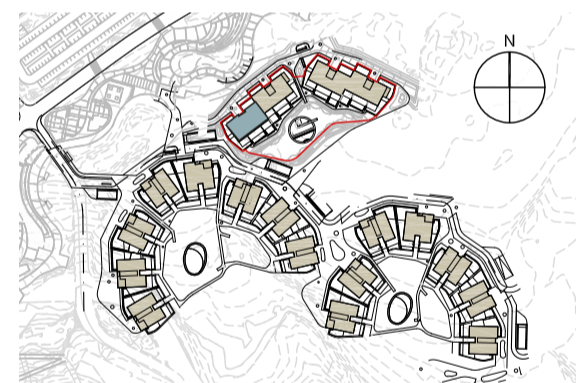
WELCOME TO EVERYTHING



VIA MARIS PHASE III OF THE RECREATIONAL AND TOURIST CENTRE OF VILA-SECA AND SALOU

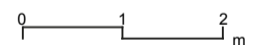


SECOND FLOOR



BALQUERA

A3 E: 1/75



BALQUERA A. BUILDING 1. BLOCK 1 - SECOND FLOOR 2ª

SURFACE AREA OF DWELLING	
LIVING ROOM + DINING ROOM + KITCHEN	27,92 m ²
BEDROOM 1	13,43 m ²
BEDROOM 2	10,23 m ²
BATHROOM 1	4,94 m ²
BATHROOM 2	3,30 m ²
HALLWAY 1	4,87 m ²
HALLWAY 2	2,71 m ²

TOTAL USEFUL SURFACE AREA 67,39 m²

TOTAL BUILT SURFACE AREA 78,85 m²

TOTAL BLT. S.A. WITH COM. AREA 105,87 m²

TOTAL USEFUL EXTERIOR S.A. 31,57 m²

NOTE:
This plan is indicative and is subject to possible changes of a technical nature or imposed by the authorised bodies. The total constructed surface area does not include exterior surface areas.