

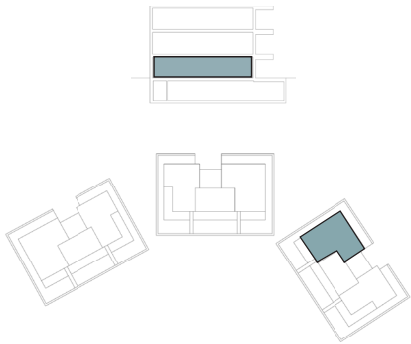


INFINITUM

WELCOME TO EVERYTHING



VIA MARIS
PLOT IV OF THE RECREATIONAL AND TOURIST
CENTER OF VILA-SECA AND SALOU



GROUND FLOOR



TRAMUNTANA A

A1 E: 1/50
A3 E: 1/100



TRAMUNTANA A. BLOCK 1 - GROUND FLOOR 1st

HOUSE AREA	
LIVING - DINING ROOM	39,40 m²
KITCHEN	20,80 m²
BEDROOM 1	15,40 m²
BEDROOM 2	9,20 m²
BEDROOM 3	9,90 m²
BEDROOM 4	11,90 m²
BATHROOM 1	5,30 m²
BATHROOM 2	4,90 m²
HALL	6,00 m²
CORRIDOR	4,70 m²
LAUNDRY	4,30 m²
TOTAL USABLE AREA	
131,80 m²	
TOTAL BUILT AREA	
154,27 m²	
TOTAL BUILT AREA WITH COMMON AREA	
207,66 m²	
PAVED TERRACE	33,85 m²
GARDEN TERRACE	39,96 m²
UNGARDENED TERRACE	81,02 m²
TOTAL USABLE AREA EXTERIOR	
154,83 m²	

NOTE:
This map is orientative and subject to possible modifications of a technical nature or imposed by authorized bodies. The total built area does not include exterior surfaces.